

# NAM STAINLESS STEEL SIGHT GLASS WITH ROTOR

## FEATURES

The NAM sight glass with rotor is designed for the visual inspection of flow for fluids inside piping.

Made of stainless steel with a PP rotor and a glass tube, it is especially designed for process fluids.

Installation in all positions. The tube is cleaned by two lateral brushes.

## AVAILABLE MODELS

NAM: G 1/4" to G 1"

G thread connections



## LIMITS OF USE

Fluid WP:	16 bar
Fluid WT°:	-5°C / +100°C
Viscosity	1 ~ 150 mm <sup>2</sup> /s



## DIRECTIVES AND MANUFACTURING STANDARDS

OBJECT	Standard
Pressure Equipment Directive 97/23/EC	A3 § 3 non-submitted
Stainless steel grade	EN 10213-4
Threaded connection	ISO 228

## FLOW-RATE TABLE

DN	Minimum flow-rate (l/minute)	Maximum flow-rate (l/minute)
G 1/4"	0.4	4
G 3/8"	0.6	8
G 1/2"	1	12
G 3/4"	1	25
G 1"	1.6	40

Information given as an indication only, and subject to possible modifications

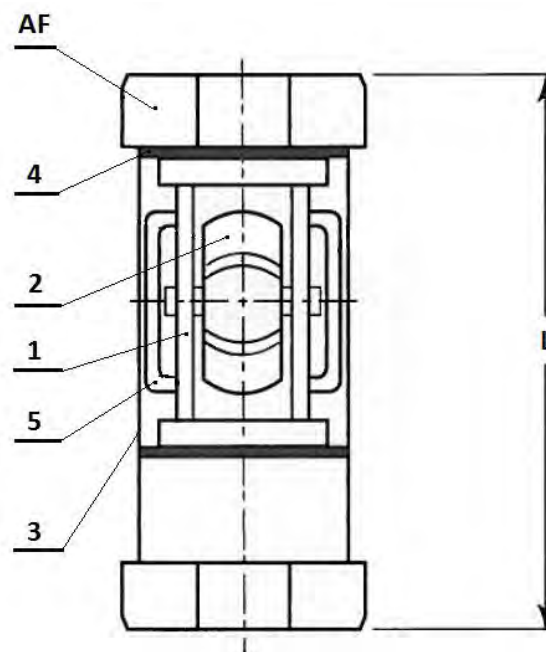
# NAM STAINLESS STEEL SIGHT GLASS WITH ROTOR

## DIMENSIONS (mm) AND WEIGHT (kg)

DN	L	AF (Tightening key)	Weight (kg)
G 1/4"	71	36	0.5
G 3/8"	71	36	0.7
G 1/2"	86	46	1.1
G 3/4"	94	46	1.2
G 1"	104	46	1.4

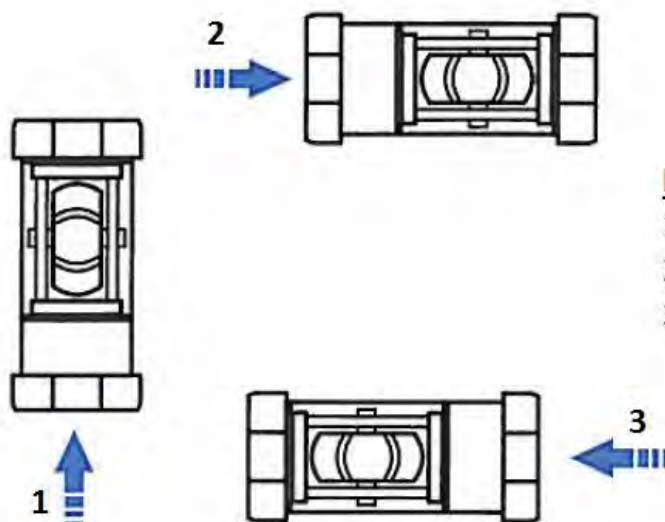
## CONSTRUCTION

No.	Name	Material
1	Body	1.4408 SS
2	Rotor	POM
3	Tube	Toughened glass
4	Gasket	FPM
5	Brush (self-cleaning)	



## INSTALLATION AND SERVICING

Installation in all positions



### Flow direction :

- 1 - Low mounting (ascending flow)
- 2 - Left to Right mounting
- 3 - Right to Left mounting

For servicing, NAM does not need disassembling, you just need to manually turn the tube so that the lateral brushes clean it.

Information given as an indication only, and subject to possible modifications